

# Residence 2

## SUMMIT COLLECTION



### PRICE

**\$2,787,530**

### FEATURES

-  5 Bedrooms
-  4 Ba, 1 Half Ba
-  4,277 Sq. Ft.
-  3 Car Garage

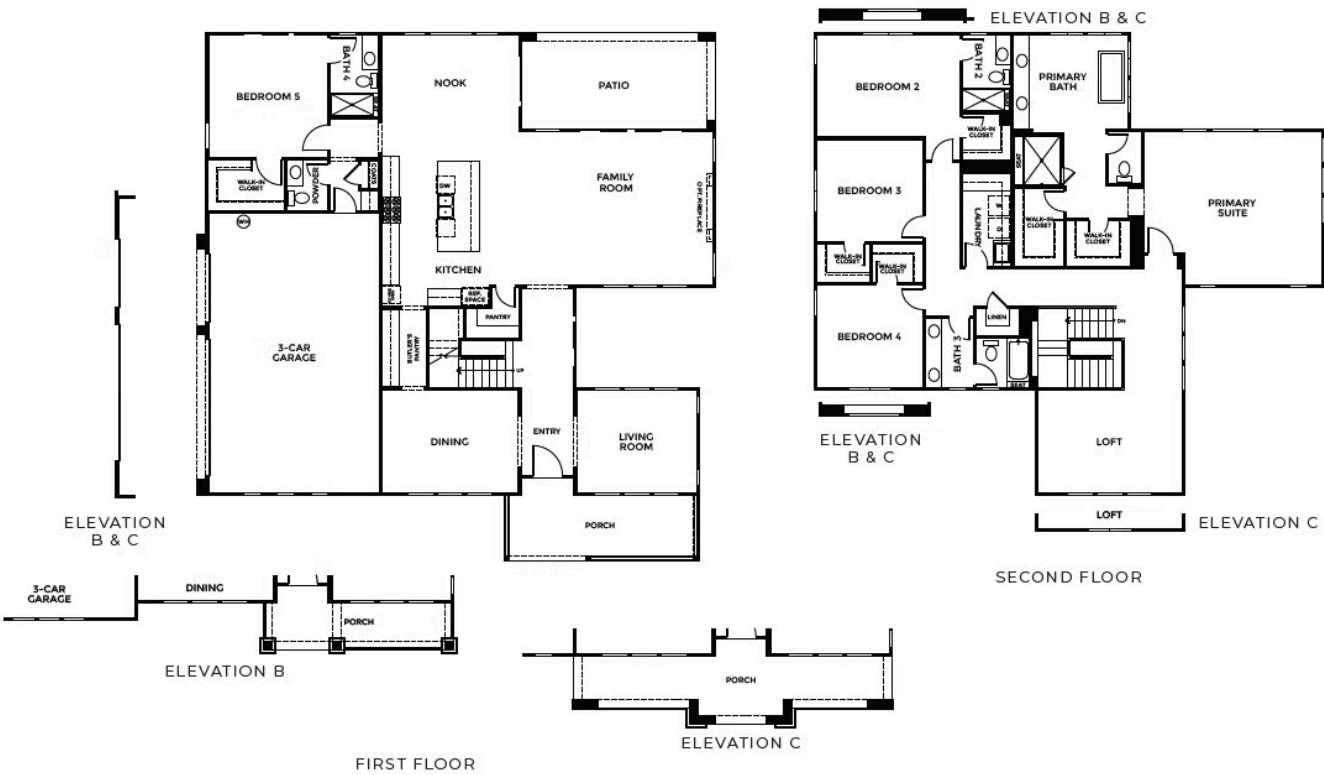
Residence 2 at Summit Collection by Trumark Homes offers approx. 4,277 Sq. Ft. of living space throughout two stories. A large porch leads into a spacious entry with a dining and living room on each side. Head down the entryway and you'll find a family room with sliding glass doors that look out an unforgettable view (view may vary per lot), breakfast nook, and a gourmet kitchen. The kitchen includes a center preparation island overlooking the family room. The kitchen is complete with recessed-panel beech cabinetry with Euro drawer slides and soft close doors in your choice of three colors, Daltile® Quartz slab countertops with 6" backsplash and full-height backsplash at cooktop, and Bosch® stainless steel kitchen appliances. The first floor features a bedroom, bathroom, and access to the home's three-car garage.

Upon the second floor, you will find the primary suite, complete with a spa-like bath with dual vanities, a walk-in shower, a standing tub, and a two spacious walk-in closets. The second story features a large loft area, laundry room, and three secondary bedrooms with two additional bathrooms. This home also includes luxury vinyl plank flooring at entry and kitchen in your choice of two colors, carpet in bedrooms, family room, and closets in your choice of three colors, Kohler plumbing features, electrical vehicle outlet at garage, energy-saving Low-E glass vinyl-framed windows throughout and much more!



# Residence 2

SUMMIT COLLECTION



# Residence 2

SUMMIT COLLECTION

GET IN TOUCH  
(925) 281-3227



ELEVATION A, B & C FRONT LOAD GARAGE