

662 Calamansi Drive

COVINA, CA 91723



PRICE
\$549,990

PLAN
Plan 2

LOCATION
Flats & Towns at Zest

FEATURES
1 Bedrooms
2 Ba
935 Sq. Ft.
1 Car Garage

Plan 2 at Zest offers 935 sq. ft. of thoughtfully designed living space in a modern three-story end-unit layout. The first floor features a direct-access garage that leads to the second level, where a spacious great room seamlessly connects to an open kitchen and a versatile flex room—perfect for a home office or additional living space.

The kitchen is appointed with premium finishes, including full-overlay, frameless flat-panel light grey cabinetry with a T-Bar pull, white quartz countertops with a designer upgraded 6" grey backsplash, and Samsung stainless steel premium appliances.

A third staircase leads to the private primary suite on the top floor, complete with an adjoining bathroom and a walk-in closet, offering a comfortable and secluded retreat. The suite is designed with relaxation in mind, featuring ample natural light, thoughtful storage solutions, and a spa-inspired bathroom for added comfort and convenience.

662 Calamansi Drive

COVINA, CA 91723

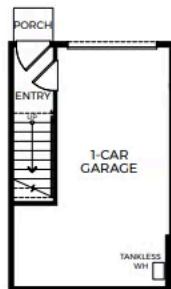
ZEST PLAN 2 FLOOR PLAN



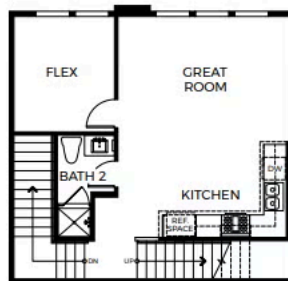
FLATS & TOWNS - PLAN 2

Three-Story | Approx. 935 Sq. Ft.
1 Bedroom + Flex Room | 2 Bathrooms | 1-Car Garage

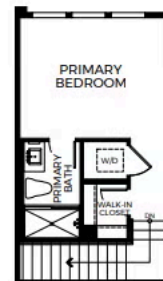
PRELIMINARY



FIRST FLOOR



SECOND FLOOR



THIRD FLOOR