

# 658 Calamansi Drive

COVINA, CA 91723



PRICE  
**\$709,990**

PLAN  
Plan 6

LOCATION  
Flats & Towns at Zest

FEATURES  
🛏 3 Bedrooms  
🚿 3 Ba, 1 Half Ba  
📏 1,629 Sq. Ft.  
🚗 2 Car Garage

There's a lot to love with Plan 6's beautifully designed three-story floor plan offering 3 bedrooms and 3.5 bath at 1,629 sq. ft. of beautiful living space. A two-car garage connects to a convenient first-floor flex room. Head to the second floor and take in the expansive great room, which flows into the dining room and kitchen. The gourmet kitchen is complete with a pantry and bar-top island that overlook the main living area. The kitchen includes full overlay, frameless flat panel contemporary white cabinetry with knobs, grey quartz kitchen countertops with a classic blue 6" backsplash, and Samsung stainless steel refrigerator and front load dishwasher.

Best of all, a third staircase elevates you to the primary bedroom – a private suite complete with an adjoining bathroom and generous walk-in closet. The stunning, spa-like bathroom features dual sinks and generously sized walk-in shower. This floor also includes a secondary bedroom with an adjoining bathroom.



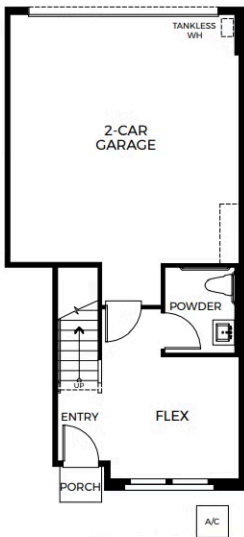
ZEST PLAN 6 FLOOR PLAN



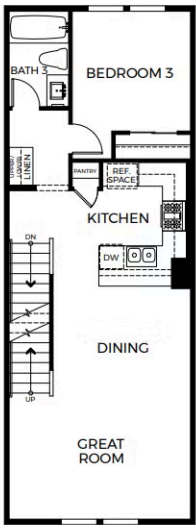
FLATS & TOWNS - PLAN 6

Three-Story | Approx. 1,629 Sq. Ft.  
3 Bedrooms + Flex Room | 3.5 Bathrooms | 2-Car Garage

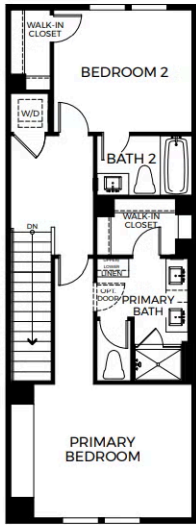
PRELIMINARY



FIRST FLOOR



SECOND FLOOR



THIRD FLOOR