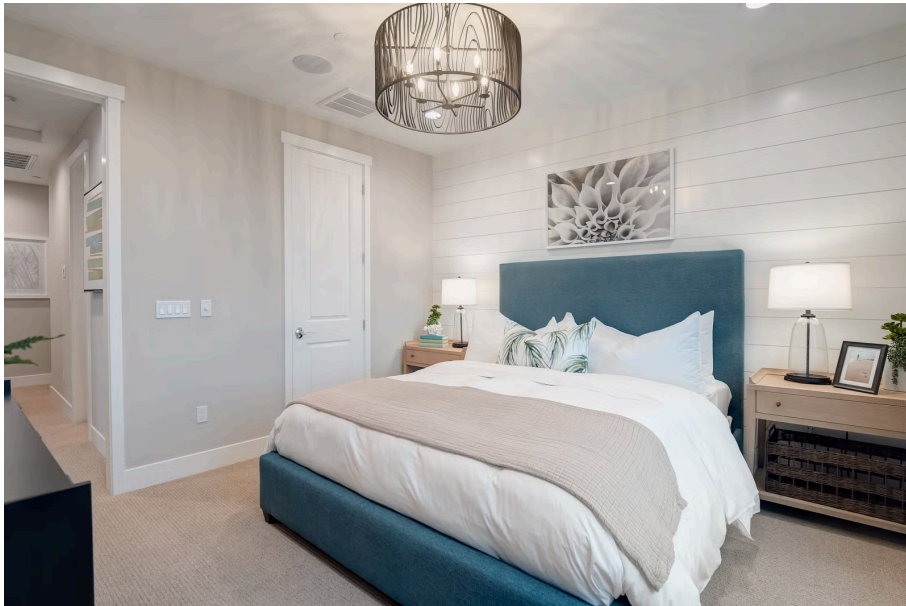


# 4450 Fontana Street

LIVERMORE, CA 94551



PRICE  
**\$1,026,773**

PLAN  
Residence 4

LOCATION  
Solera at Arroyo Crossings

FEATURES  
🛏 4 Bedrooms  
🚿 2 Ba, 1 Half Ba  
📏 1,751 Sq. Ft.  
🚗 2 Car Garage

Welcome to Homesite 126 at Solera at Arroyo Crossings, a spacious 1,751 sq. ft. two-level garden court townhome, move-in ready by December.

This north-east facing end-unit offers added privacy and abundant natural light, along with included electrical upgrades and designer finishes throughout. The kitchen features Shaker-style smoked gray cabinets accented by brushed nickel hardware. This home also includes an installed solar system, with the option to lease or purchase, and a side-by-side 2-car garage for everyday convenience.

On the first floor, a powder room and direct garage access enhance daily functionality. Upstairs, the primary suite offers a spa-like retreat with dual vanities, a walk-in shower, and a walk-in closet. Three additional bedrooms and a full shared bathroom provide plenty of space for family or guests, along with a convenient upstairs laundry room.

Located in the desirable Arroyo Crossings community, residents enjoy access to exceptional amenities, including a clubhouse with a chef's kitchen, lounge areas, a pool, BBQ/picnic spaces, and scenic pocket parks.

Schedule your appointment today to tour this beautiful new home!

\*Representative photos added.

