

# Plan 2

## EDEN AT COVENANT POINT



PRICE  
**\$920,315**

### FEATURES

-  4 - 5 Bedrooms
-  3 Ba, 1 Half Ba
-  3,141 Sq. Ft.
-  3 Car Garage
-  1 Flex

Plan 2 at Eden offers the perfect blend of space, comfort, and flexibility across two beautifully designed levels. With approximately 3,141 square feet, this home features 4 to 5 bedrooms, 3.5 baths, and an open-concept layout that brings everyone together.

The main floor includes a spacious kitchen with a large island and walk-in pantry that flows into the dining area and great room. A first-floor bedroom with private bath is ideal for guests or multi-gen living, and an optional covered patio offers the opportunity to extend your living outdoors.

Upstairs, the expansive primary suite features a large walk-in closet and luxurious bath with a freestanding tub and dual vanities. Two additional bedrooms share a full bath, while a versatile loft can be optioned as a fifth bedroom. A separate flex room provides even more space to personalize—ideal for a home office, gym, or hobby area.

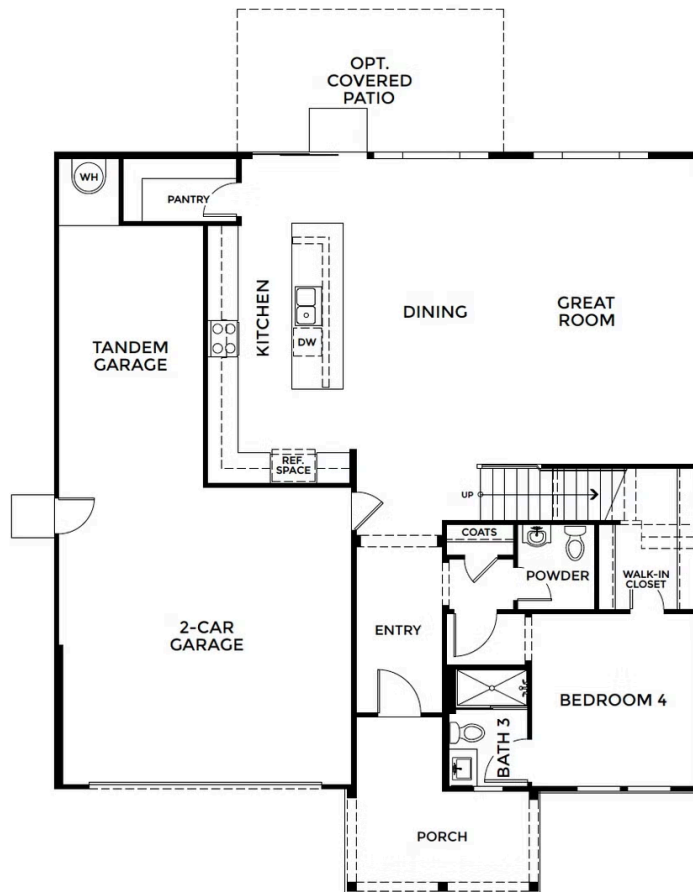
A 3-car tandem garage, upstairs laundry room, and plenty of storage throughout make Plan 2 both practical and stylish for modern living.



# Plan 2

EDEN AT COVENANT POINT

FIRST FLOOR AT PLAN 2 AT EDEN AT COVENANT POINT BY TRUMARK HOMES



# Plan 2

EDEN AT COVENANT POINT

## SECOND FLOOR AT PLAN 2 AT EDEN AT COVENANT POINT BY TRUMARK HOMES

