

Canto

ARIETTE AT RIVERSTONE



FEATURES

-  3 Bedrooms
-  2 Ba, 1 Half Ba
-  1,713 Sq. Ft.
-  2 Car Garage

The Canto plan at Ariette at Riverstone, is an exquisite two-story residence, designed with functionality and style in mind. The kitchen features ample cabinetry, and beautiful countertops, making meal preparation a delight. Adjacent to the kitchen, the dining and Great Room provides cozy spaces for family meals and gatherings. Upstairs, the owner's suite offers a serene retreat, complete with a luxurious en-suite bathroom and ample closet space. Also upstairs, two additional bedrooms and loft share a well-appointed full bathroom, ensuring comfort and privacy for family members and guests alike.

Canto

ARIETTE AT RIVERSTONE

Ariette
COPPER RIVER

TRUMARKHOMES

CANTO

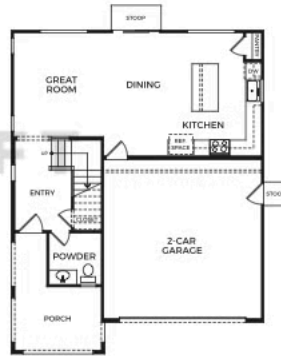
1,713 Sq. Ft.

3 Bedrooms w/ Loft

2.5 Baths

2 Car Garage

DRAFT



FIRST FLOOR



SECOND FLOOR

Trumark Homes reserves the right to make modifications to materials, specifications, plans, pricing, various fees, designs, scheduling and delivery of homes without prior notice. It also reserves the right to accept or reject offers or to take directions to accept a limited number of offers on non-occupied residences and to sell any residence to any party at any time. This is not an offer to sell but is intended for information only. Square footage is approximate. Homes shown may not represent actual homesites. People shown do not display racial preference. CA DRE License #01877720.

