

205 Niebla Lane

MISSION VIEJO, CA 92692

GET IN TOUCH
(949) 676-6377



PRICE
\$679,900

PLAN
Plan 2

LOCATION
Saddleback Place

FEATURES

-  1 Bedrooms
-  1 Ba, 1 Half Ba
-  874 Sq. Ft.
-  1 Car Garage

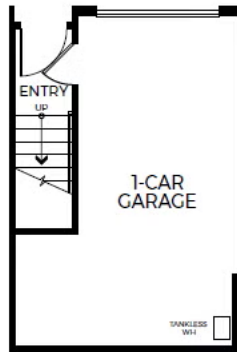
With 874 sq. ft. of thoughtfully planned living space, Plan 2 at Saddleback Place three-story end-unit floor plan is all about modern conveniences. Come home to a direct-access garage that leads upstairs to the main floor, where a spacious great room seamlessly flows into an open kitchen and a covered deck. Best of all, a third staircase elevates you to the primary bedroom – a private suite complete with an adjoining bathroom and generous walk-in closet.

205 Niebla Lane

MISSION VIEJO, CA 92692

GET IN TOUCH
(949) 676-6377

SADDLEBACK PLACE PLAN 2

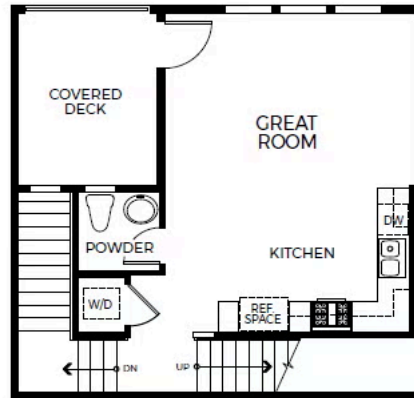


205 Niebla Lane

MISSION VIEJO, CA 92692

GET IN TOUCH
(949) 676-6377

SADDLEBACK PLACE PLAN 2X



205 Niebla Lane

MISSION VIEJO, CA 92692

GET IN TOUCH
(949) 676-6377

SADDLEBACK PLACE PLAN 2

