

Plan 2

SUNSET AT MELROSE HEIGHTS



FEATURES

-  2 Bedrooms
-  2 Ba, 1 Half Ba
-  1,222 Sq. Ft.
-  2 Car Garage

SOLD OUT!

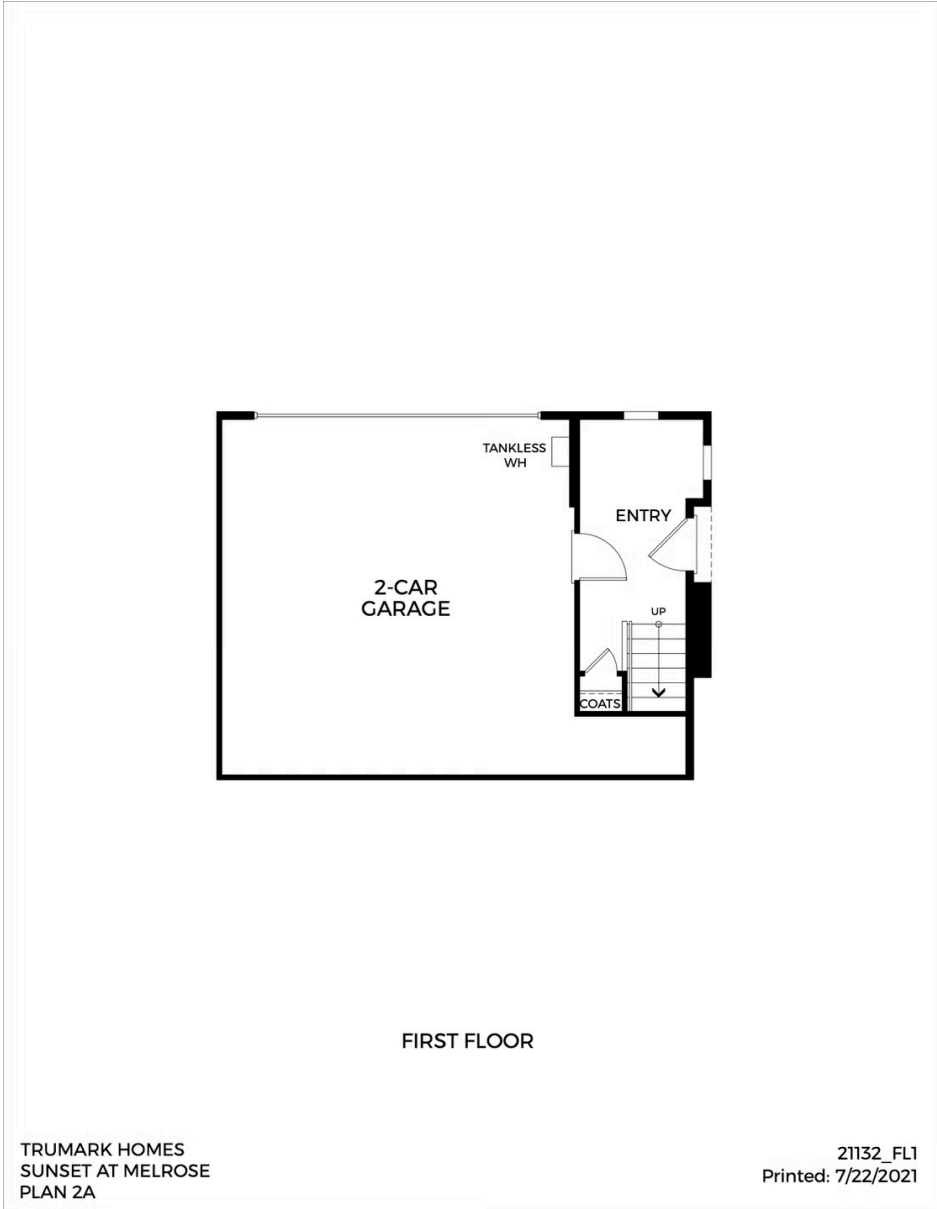
Sunset's Plan 2 at Melrose Heights is a captivating three-story townhome offering 1,222 sq. ft. of living space. Head past the foyer and up the stairs you'll find the kitchen overlooking the multifunctional great room, dining room, and balcony. This gourmet kitchen is complete with a pantry and center preparation island with dual sinks. The kitchen includes full overlay, raised panel cabinetry with your choice of satin nickel classic knobs or t-bar handles, granite or quartz kitchen countertops with 6" backsplash, and Samsung stainless steel premium appliance package.

The top floor features a secondary bedroom and bathroom along with a generous owner's suite. The suite includes a stunning, spa-like bathroom with dual sinks, a walk-in shower and bathtub, and spacious walk-in closet. This plan comes with your color choice of Mohawk vinyl flooring at the kitchen, bathrooms and laundry, Quality Mohawk carpet in multiple color choices, and much more!

Plan 2

SUNSET AT MELROSE HEIGHTS

FIRST FLOOR



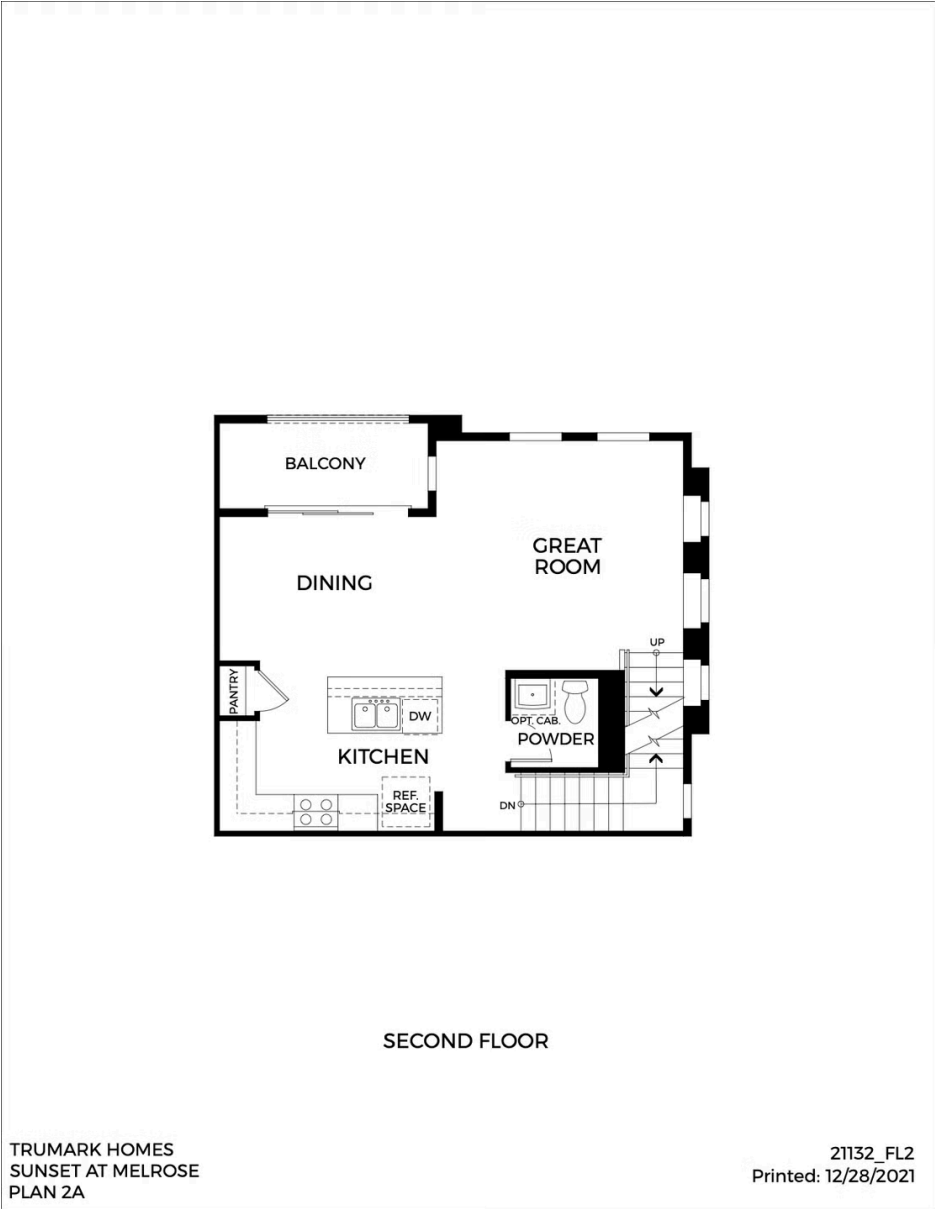
TRUMARK HOMES
SUNSET AT MELROSE
PLAN 2A

21132_FL1
Printed: 7/22/2021

Plan 2

SUNSET AT MELROSE HEIGHTS

SECOND FLOOR



Plan 2

SUNSET AT MELROSE HEIGHTS

THIRD FLOOR

