

Plan 4

SUNSET AT MELROSE HEIGHTS



FEATURES

-  4 Bedrooms
-  3 Ba, 1 Half Ba
-  1,767 Sq. Ft.
-  2 Car Garage

Now Selling

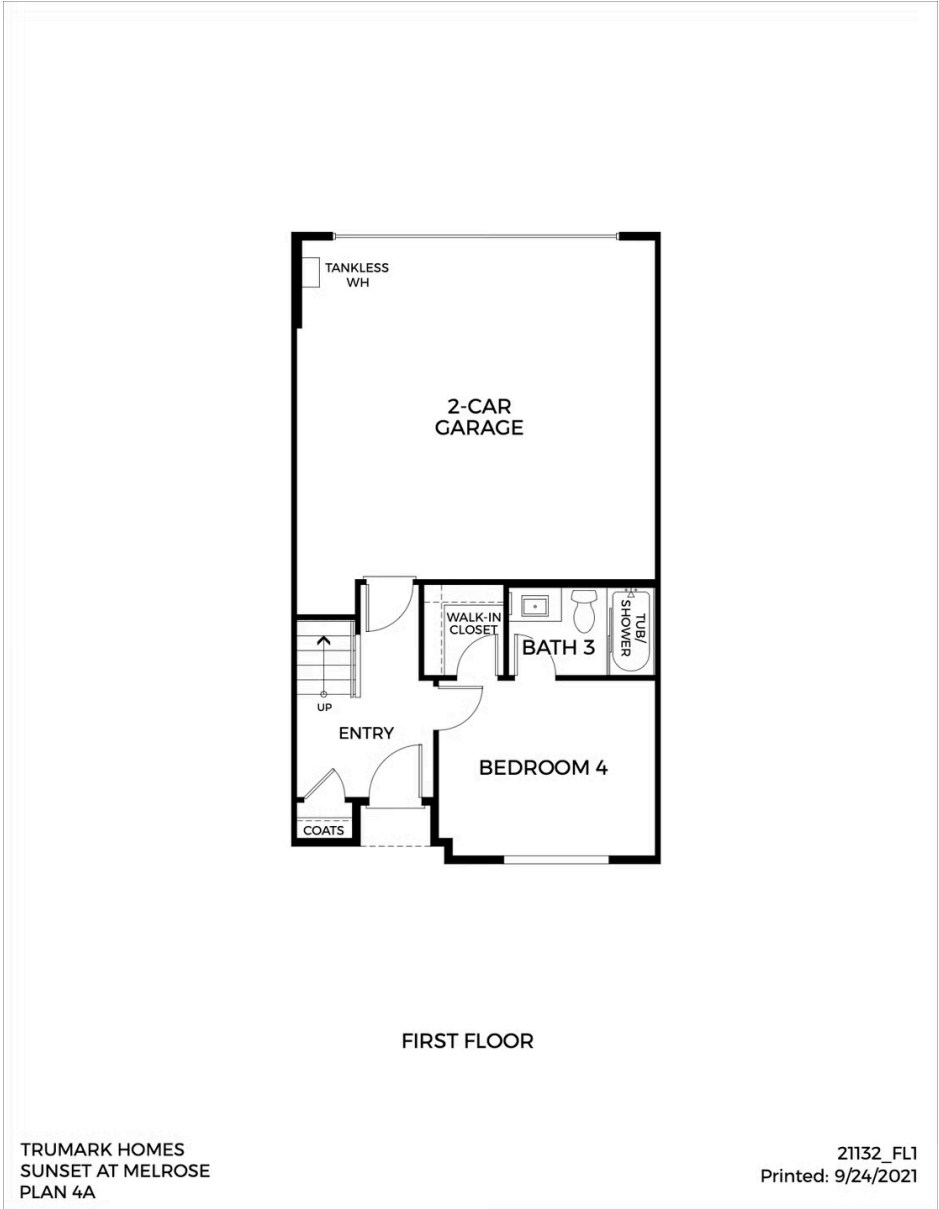
Plan 4 at Sunset is an expansive three-story townhome offering 1,767 sq. ft. of living space. Just past the foyer you'll find a secondary bedroom, ensuite bathroom, and spacious walk-in closet. Upstairs is the main living area including the flex room, dining room, great room, kitchen, and balcony. The gourmet kitchen is complete with a generous walk-in pantry, center preparation island, and dual sinks. This kitchen is complete with a center preparation island, pantry, and dual sinks. The kitchen includes full overlay, raised panel cabinetry with your choice of satin nickel classic knobs or t-bar handles, granite or quartz kitchen countertops with 6" backsplash, and Samsung stainless steel premium appliance package.

The third floor features two secondary bedrooms and bathroom along with a generous owner's suite. The suite includes a stunning, spa-like bathroom with dual sinks, a walk-in shower and bathtub, and spacious walk-in closet. This plan comes with your color choice of Mohawk vinyl flooring at the kitchen, bathrooms and laundry, Quality Mohawk carpet in multiple color choices, and much more!

Plan 4

SUNSET AT MELROSE HEIGHTS

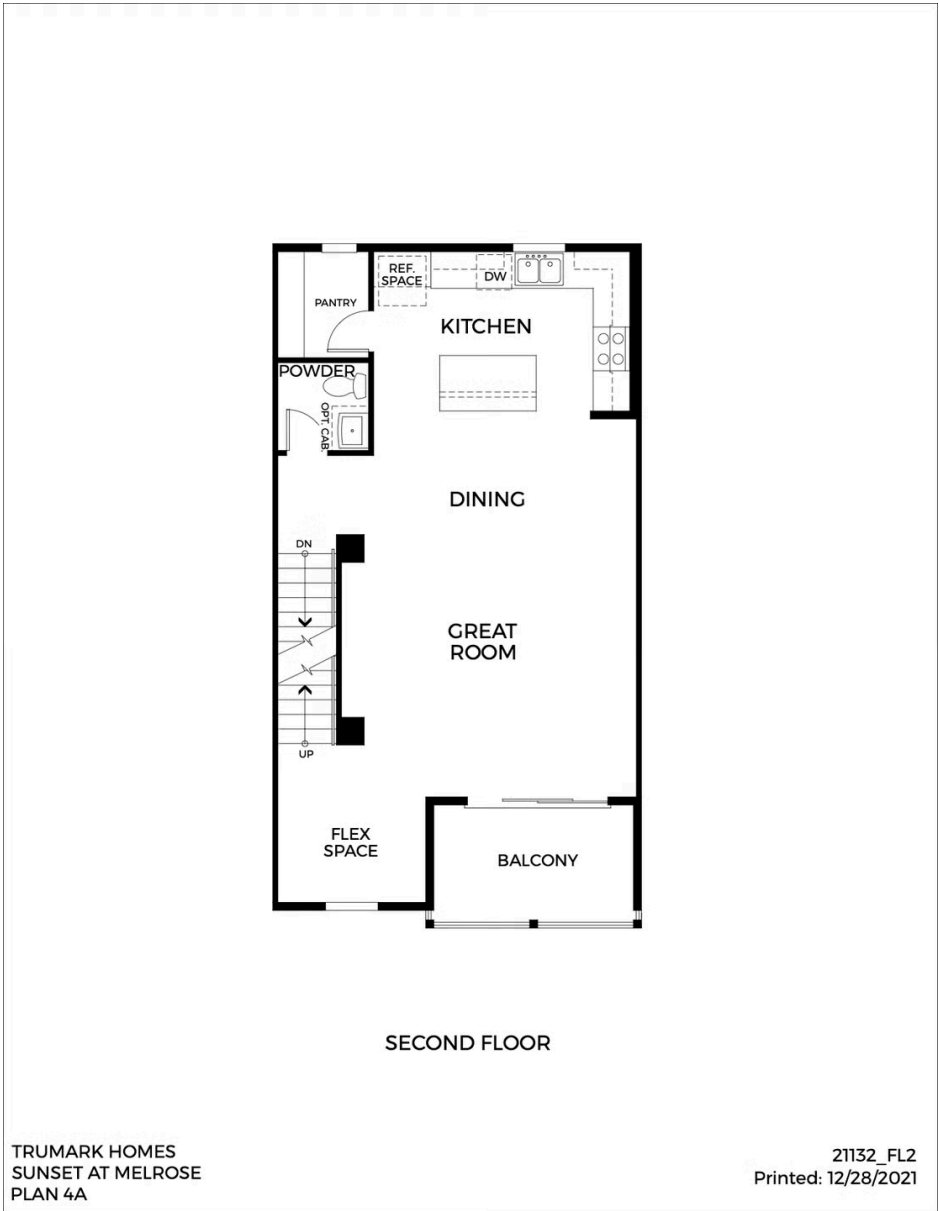
FIRST FLOOR



Plan 4

SUNSET AT MELROSE HEIGHTS

SECOND FLOOR



Plan 4

SUNSET AT MELROSE HEIGHTS

THIRD FLOOR

