

# Plan 2

KITCHEL LAKE AT SERRATOGA FALLS



## PRICE

**\$734,900**

## FEATURES

-  3 - 4 Bedrooms
-  2 Ba, 1 Half Ba
-  2,228 - 3,241 Sq. Ft.
-  3 Car Garage

Plan 2 at KitcheL Lake is a contemporary single-story home offering up to 3,184 Sq. Ft. of living space with three bedrooms and two and a half baths. The home features an inviting porch with secondary bedrooms and an office just through the entrance hall. Beyond is the gourmet kitchen featuring a spacious walk-in pantry and a center preparation island that overlooks the dining and great rooms, complete with an optional gas fireplace. The kitchen includes 42" deluxe cabinetry, quartz countertops with tile backsplash, stainless steel appliance package with a 5-burner gas cooktop, a convection oven, a built-in microwave, and a dishwasher.

The great room opens up to the covered outdoor room. The primary suite, located just off the great room offers a stunning, spa-like bathroom with a walk-in shower and optional freestanding tub. An expansive walk-in closet completes the primary suite.

The optional finished basement features an additional secondary bedroom. Additional basement options are also available including an optional wet bar for easy entertaining and a walk-out staircase leading to the covered outdoor room above. The home comes with extensive plank laminate flooring in the entry and kitchen, luxurious carpet in bedrooms, deluxe primary shower tile, spacious 9 or 10-foot ceilings, insulated steel garage door, tankless water heater and AC, and much more!



# Plan 2

KITCHEL LAKE AT SERRATOGA FALLS



## PLAN 2 - ELEVATIONS

3 – 4 Bedrooms • 2.5 – 3.5 Baths • 3-Car Garage  
Approx. 2,228 – 3,184 Finished Sq. Ft.



Elevation 2A - Modern Farmhouse



Elevation 2B - Modern Prairie



Elevation 2C - Modern Mountain

970.450.5504 | [KitchelLakeSales@trumarkco.com](mailto:KitchelLakeSales@trumarkco.com) | 1432 Alyssa Drive, Timnath, CO 80547 | [VIP-KITCHEL.COM](http://VIP-KITCHEL.COM)

TRUMARKHOMES

This is not an offer to sell but is intended for information only. Trumark Homes reserves the right to make modifications to materials, specifications, brand names, appliances, fixtures, plans, pricing, various fees, designs, scheduling, and delivery of homes without prior notice. Square footages are approximate. Plans and dimensions may contain minor variations from floor to floor. Floor plans are for representational purposes only. Homes shown do not represent actual homesites. Rendering and photographs are artists' conceptions and do not reflect actual homesites. Models do not display racial preference. Updated 03/27/2025. 🏡

Plan 2

KITCHEL LAKE AT SERRATOGA FALLS

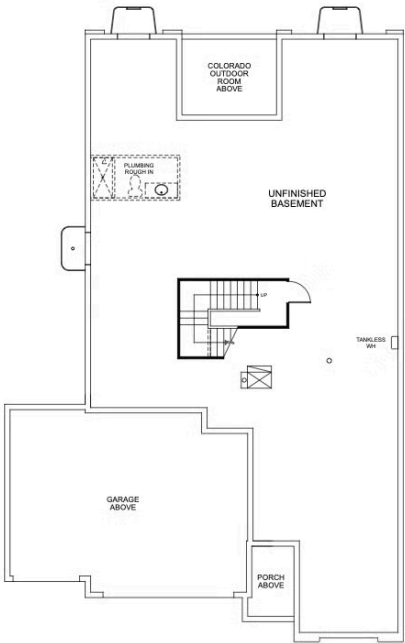


PLAN 2

3 – 4 Bedrooms • 2.5 – 3.5 Baths • 3-Car Garage  
Approx. 2,228 – 3,184 Finished Sq. Ft.



FIRST FLOOR



BASEMENT

970.450.5504 | KitchelLakeSales@trumarkco.com | 1432 Alyssa Drive, Timnath, CO 80547 | VIP-KITCHEL.COM



This is not an offer to sell but is intended for information only. Trumark Homes reserves the right to make modifications to materials, specifications, brand names, appliances, fixtures, plans, pricing, various fees, designs, scheduling, and delivery of homes without prior notice. Square footages are approximate. Plans and dimensions may contain minor variations from floor to floor. Floor plans are for representational purposes only. Homes shown do not represent actual homesites. Rendering and photographs are artists' conceptions and do not reflect actual homesites. Models do not display racial preference. Updated 03/27/2025.



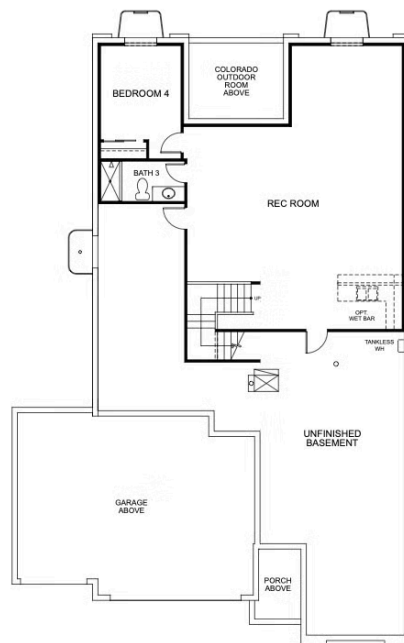
# Plan 2

KITCHEL LAKE AT SERRATOGA FALLS



## PLAN 2 - BASEMENT OPTIONS

3 – 4 Bedrooms • 2.5 – 3.5 Baths • 3-Car Garage  
Approx. 2,228 – 3,184 Finished Sq. Ft.



OPTIONAL FINISHED BASEMENT

970.450.5504 | [KitcheLakeSales@trumarkco.com](mailto:KitcheLakeSales@trumarkco.com) | 1432 Alyssa Drive, Timnath, CO 80547 | [VIP-KITCHEL.COM](http://VIP-KITCHEL.COM)

TRUMARKHOMES

This is not an offer to sell but is intended for information only. Trumark Homes reserves the right to make modifications to materials, specifications, brand names, appliances, fixtures, plans, pricing, various fees, designs, scheduling, and delivery of homes without prior notice. Square footages are approximate. Plans and dimensions may contain minor variations from floor to floor. Floor plans are for representational purposes only. Homes shown do not represent actual homesites. Rendering and photographs are artists' conceptions and do not reflect actual homesites. Models do not display racial preference. Updated 03/27/2025.