

# 1633 Winter Glow Drive

WINDSOR, CO 80550



PRICE  
**\$769,900**

PLAN  
Plan 2

LOCATION  
Festival at RainDance

## FEATURES

-  3 Bedrooms
-  2 Ba, 1 Half Ba
-  2,230 Sq. Ft.
-  2 Car Garage

Welcome to homesite 60 of the Duet Collection at Sterling Ranch, a spacious duplex home offering approximately 1,720 sq. ft. of thoughtfully designed living space. This plan features a large dining room, covered outdoor room, and an in-ground unfinished basement, blending modern living with everyday comfort. The home includes a professionally curated design package with LVP wood-like flooring, a tankless water heater, gas line to range, air conditioning, and more, creating a harmonious balance of style and functionality.

**Key features** include the Colorado Farmhouse elevation, 3 bedrooms and 2.5 bathrooms, and a kitchen outfitted with white cabinets, quartz countertops, and KitchenAid appliances. The unfinished basement provides generous storage opportunities, while the 2-car garage features an 8' door for added convenience. Enjoy peaceful surroundings with a home that fronts open space and is just moments from nearby parks, ideal for an active, connected lifestyle.



# 1633 Winter Glow Drive

WINDSOR, CO 80550

## FESTIVAL AT RAINDANCE

## RESIDENCE 2 - ELEVATIONS

3 – 5 Bedrooms • 2.5 – 4.5 Baths • 2-Car Garage  
Approx. 2,230 – 3,504 Sq. Ft.



ELEVATION A – MODERN FARMHOUSE



ELEVATION B – MODERN PRAIRIE



ELEVATION C – MODERN MOUNTAIN

1554 Winter Glow Drive, Windsor, CO 80550 | 970.446.8804 | RainDanceSales@trumarkco.com | VIP-RainDance.com

This is not an offer to sell but is intended for information only. Trumark Homes reserves the right to make modifications to materials, specifications, brand names, appliances, fixtures, plans, pricing, various fees, designs, scheduling, and delivery of homes without prior notice. Square footages are approximate. Plans and dimensions may contain minor variations from floor to floor. Floor plans are for representational purposes only. Homes shown do not represent actual homesites. Rendering and photographs are artists' conceptions and do not reflect actual homesites. Models do not display racial preference Updated 01/14/2025.

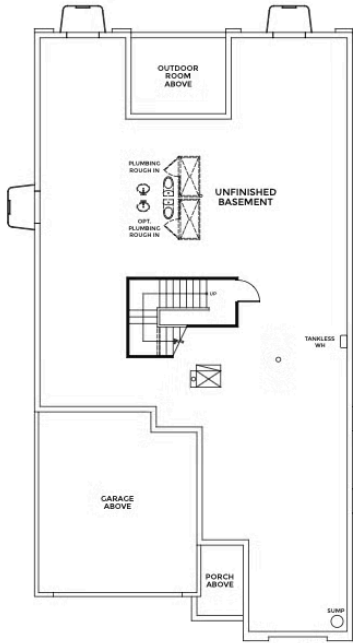
# 1633 Winter Glow Drive

WINDSOR, CO 80550

## FESTIVAL AT RAINDANCE

### RESIDENCE 2

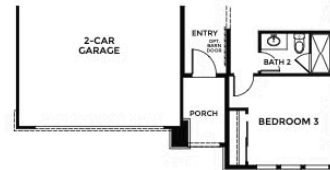
3 – 5 Bedrooms • 2.5 – 4.5 Baths • 2-Car Garage  
Approx. 2,230 – 3,504 Sq. Ft.



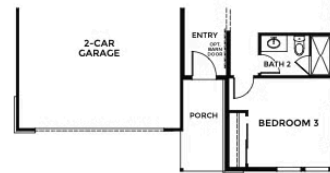
BASEMENT



FIRST FLOOR



ELEVATION B



ELEVATION C

1554 Winter Glow Drive, Windsor, CO 80550 | 970.446.8804 | RainDanceSales@trumarkco.com | VIP-RainDance.com

This is not an offer to sell but is intended for information only. Trumark Homes reserves the right to make modifications to materials, specifications, brand names, appliances, fixtures, plans, pricing, various fees, designs, scheduling, and delivery of homes without prior notice. Square footages are approximate. Plans and dimensions may contain minor variations from floor to floor. Floor plans are for representational purposes only. Homes shown do not represent actual homesites. Rendering and photographs are artists' conceptions and do not reflect actual homesites. Models do not display racial preference Updated 01/14/2025.

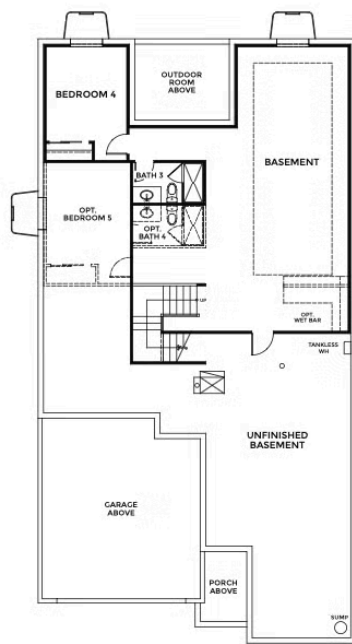
# 1633 Winter Glow Drive

WINDSOR, CO 80550

## FESTIVAL AT RAINDANCE

## RESIDENCE 2 - BASEMENT OPTIONS

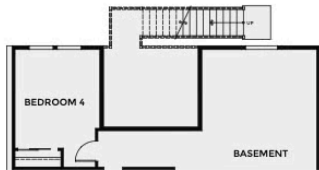
3 – 5 Bedrooms • 2.5 – 4.5 Baths • 2-Car Garage  
Approx. 2,230 – 3,504 Sq. Ft.



OPTIONAL  
FINISHED BASEMENT



OPTIONAL WALK-OUT  
AT FINISHED BASEMENT



OPTIONAL GARDEN LEVEL  
AT FINISHED BASEMENT

OPTIONAL BEDROOM 5



1554 Winter Glow Drive, Windsor, CO 80550 | 970.446.8804 | RainDanceSales@trumarkco.com | VIP-RainDance.com

This is not an offer to sell but is intended for information only. Trumark Homes reserves the right to make modifications to materials, specifications, brand names, appliances, fixtures, plans, pricing, various fees, designs, scheduling, and delivery of homes without prior notice. Square footages are approximate. Plans and dimensions may contain minor variations from floor to floor. Floor plans are for representational purposes only. Homes shown do not represent actual homesites. Rendering and photographs are artists' conceptions and do not reflect actual homesites. Models do not display racial preference Updated 01/14/2025.

TRUMARKHOMES

# 1633 Winter Glow Drive

WINDSOR, CO 80550

GET IN TOUCH  
(970) 499-8222

